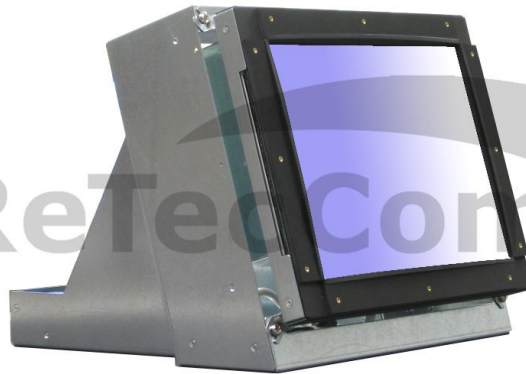


15" TFT Monitor for Diebold ATMs - TRANSFLECTIVE -



Series: TFT-15-GAA

This built-in monitor is a special solution for change cathode ray tube monitors (CRT) and is in transreflective panel version available.

The transreflective monitor is based on the newest state-of-the-art technology in the market. This solution offers a reflector that is behind the real LCD segment, which reflects the complete incoming light from the front side.

The reflecting brightness from inside depends on the brightness from outside.
-> Higher sunlight – better clearness of the display!

This display technology is an absolute alternative to the previous sunlight monitors, with the following additional assets:

- Ø low power usage (because normal background lighting)
- Ø no automatic control of the background lighting necessary
- Ø longer life cycle, because less sensitive technic
- Ø lower pricing, because of lower technical investments

At present for all '10xx ix' models insertable!

The monitor set is complete with fittings – the time work for change the CRT monitor locally is amounting to max. 20 minutes -> plug and play!

Technical Data

TFT-15-GAA

Display:

Size 15"
 Brightness 600 cd/m² (Basic)
 Contrast 600 : 1
 Resolution timings 1024 x 768 Pixel
 -> DOS / VGA / SVGA / XGA

Transflective

Input signal:

Videonorm VGA RGB analog , DVI
 H. frequency 31 - 35 kHz
 V. frequency 50 - 75 Hz
 Sync. signal H/V separated, TTL level
 Pixelclock max. 85 MHz
 Colours 6 bit per colour

Adjustments (OSD):

brightness, contrast, horizontal position, vertical position,
 default; settings saved automatically

Connections:

Signal input -> 15 pol.SUB-D High Density
 -> DVI
 Power 230 V / AC - external power supply
 Power consumption approx. 30 W / transflective: approx. 50 W
 Power management background lighting is switched off by missing video signal

Operating conditions:

Operating temperature: 0° - 50°C (32° - 122° F)

MTBD:

Background lighting approx. 50.000 hours / 25°C (77° F)

Weight:

approx.. 4,5 Kg (9.8 lbs)

Manufactured according to:

EMC: EN55022, EN55024, EN61000; CE: conform

Delivery volume:

15" chassis with safety glass + ext. power supply + monitor fittings

Warranty:

24 month

Versions:

Diebold 1064ix / 1070ix / 1071ix / 1075ix / 1077ix	Transflective
49-011972-000A	015-T0-R07-1071
49-018349-000A	015-T0-R07-1071
49-018349-000B	015-T0-R07-1071
49-018349-000D	015-T0-R07-1071

Date: 04/2010